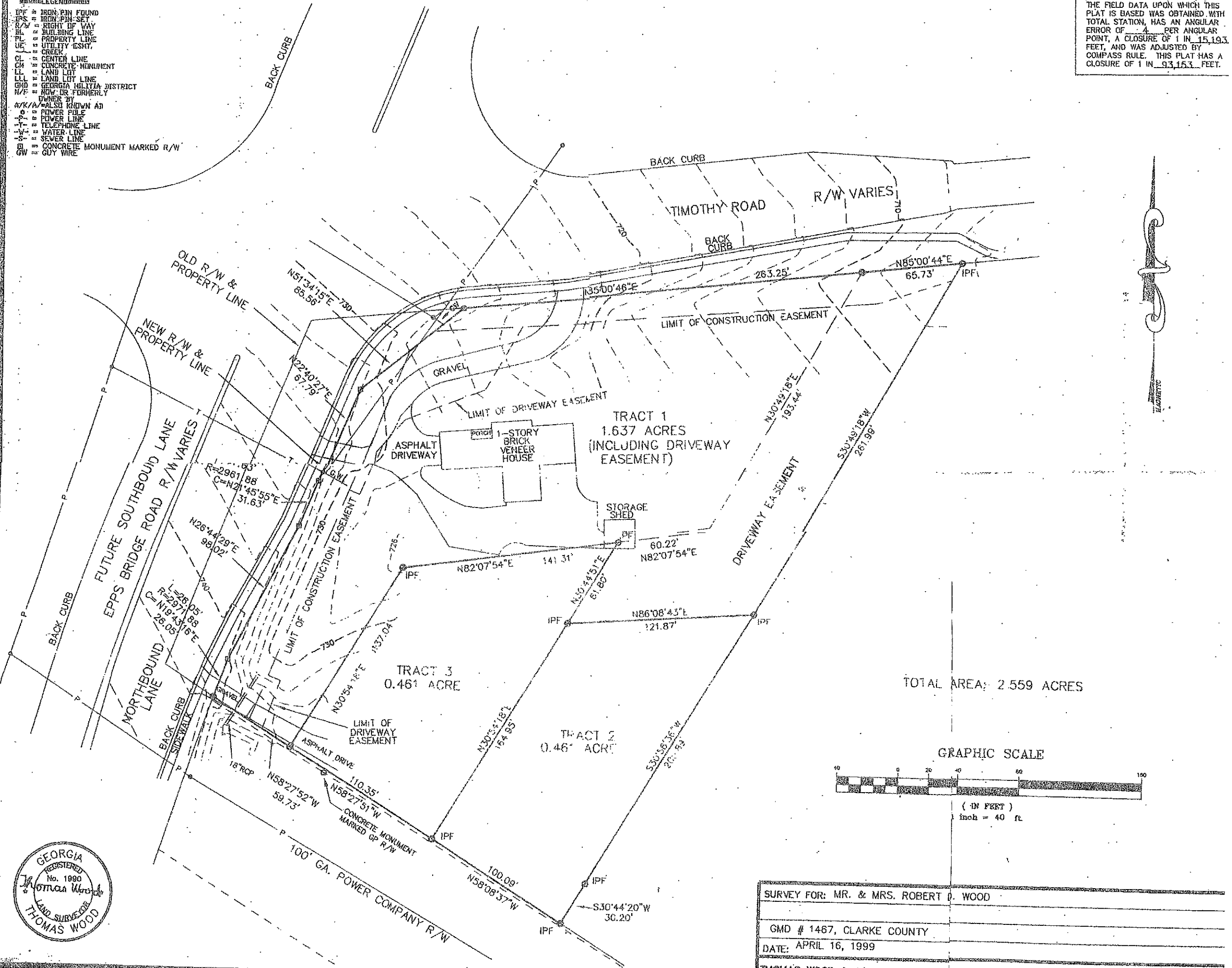


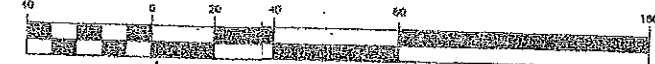
- LEGEND**
- IPF = IRON PIN FOUND
 - IPS = IRON PIN SET
 - R/W = RIGHT OF WAY
 - BL = BUILDING LINE
 - PL = PROPERTY LINE
 - UL = UTILITY ESHOT
 - CR = CREEK
 - CL = CENTER LINE
 - CM = CONCRETE MONUMENT
 - LL = LAND LOT
 - LLL = LAND LOT LINE
 - GMD = GEORGIA MILITIA DISTRICT
 - N/F = NOW OR FORMERLY
 - D/W = DRAINAGE
 - A/R/A = ALSO KNOWN AS
 - P = POWER PILE
 - P = POWER LINE
 - T = TELEPHONE LINE
 - W = WATER LINE
 - S = SEWER LINE
 - CM = CONCRETE MONUMENT MARKED R/W
 - GW = GUY WIRE

THE FIELD DATA UPON WHICH THIS PLAT IS BASED WAS OBTAINED WITH TOTAL STATION, HAS AN ANGULAR ERROR OF .4 PER ANGULAR POINT, A CLOSURE OF 1 IN 15,193 FEET, AND WAS ADJUSTED BY COMPASS RULE. THIS PLAT HAS A CLOSURE OF 1 IN 93,153 FEET.

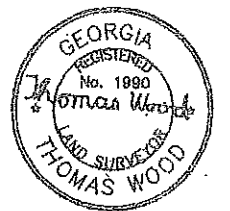


TOTAL AREA: 2.559 ACRES

GRAPHIC SCALE



(IN FEET)
1 inch = 40 ft.



SURVEY FOR: MR. & MRS. ROBERT D. WOOD
GMD # 1467, CLARKE COUNTY
DATE: APRIL 16, 1999
THOMAS WOOD & ASSOC.; 50 MAIN STREET; BUFORD, GA. 30518; PHONE 770-945-3804